



M6210 USB Flash Drive Duplicator



NEW... USB Production Duplicator from the Industry Leader

Simple to Use Fast Reliable Versatile

Features

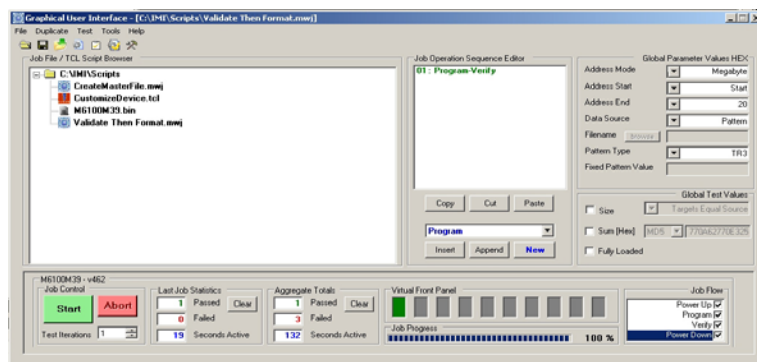
- High Quality, Stand Alone USB Flash Drive Duplicator
- Supports USB 1.1 & USB 2.0 Flash Drives
- Separate Slots for Master Drive and Ten Copy Drives
- Typical Program Speeds >300 MB/Min for Fully Loaded Machine
- Optional Mechanical Panels for 20, 30, and 40 Socket Configurations
- Win PC Program for Setup and Control Using Standard USB 2.0 Port
- Automatic Sizing and Size Checking of the Master and Copy Cards



M62W Win PC Control Program

M62W Features.....

- User Defined Jobs
- Simple Setup and Execute from Win PC
- Creation and Storage of Master Data
- Interfaces to M6210 using standard PC USB 2.0 port
-



M6210 ... A Simple yet Powerful Stand Alone Production USB Duplicator

The M6210 production USB duplicator is normally used in a Stand Alone Mode. The front panel keys allow the user to select from a number of standard functions displayed on the LCD display. In a typical duplication job, the USB master drive is loaded into the M6210 Master Slot and ten copy USB drives are loaded into the ten M6210 USB drive copy slots. The Start Key on the front of the M6210 is then depressed, and all 10 copy drives are now programmed with the exact information on the Master Drive.

When the user desires more than 10 copy slots (i.e. 20, 30, or 40 copy slots), multiple M6210's can be stacked on top of each other and held together using optional side brackets.

Included with the M6210 is the Win PC program M62W which allows job setup and control from a standard Win PC. M6210 jobs configured using M62W are stored on the M6210 and can be selected from the M6210 front panel interface. M62W allows creation and programming of Master Files. When a Master File is copied, the M6210 must be connected to the user's Win PC.

M6210 Specifications

Copy Capacity:	1 Master Slot and 10 Copy Slots
Speed:	> 300MB/min for fully loaded machine
Display:	24 x 2 LCD
Power Supply:	200W 115V/230V SPS
Dimensions:	7"x15.5"x3.5"
Computer Interface:	USB 2.0 Device Port
Weight:	15 lbs (7 Kg) (M6110)
ROHS Compliant	

System Part Numbers and Description

M6210-USB	USB Duplicator with 10 slots	
M6220-USB	USB Duplicator with 20 slots (Note 2 M6210's with side panels)	
M6230-USB	USB Duplicator with 30 slots	3 "
M6240-USB	USB Duplicator with 40 slots	4 "

